

# Steve



**The Totally Fun Comic Strip by Dan Killeen**

Summer 2011

Dear Editor:

Welcome to the wonderful world of Steve! It is a world where our title character wanders between the fantastic and the everyday, where his egg-like physique goes unnoticed by the other characters, and where fun makes a comeback on the funny pages.

Steve is a single, working “adult” with the heart and mind of an eleven-year-old. His monologues often dictate abrupt scene changes in which Steve and those around him are whisked away to absurd circumstances in faraway lands, historical moments or dreamscapes. Beneath the colorful characters and outlandish scenarios run themes familiar to all: friendship, dating, work, technology, consumerism, morality, health and recreation.

A parade of supporting characters passes in and out of Steve’s day, keeping his interactions fresh and ever changing. These characters come in two different forms: 1) ordinary folks like coworkers, friends and people on the street, and 2) *extraordinary* folks like robots, goblins, aliens and dragons. The latter group dwells on the borderline between reality and the world of Steve’s hyper imagination.

The strip casts a wide net and is intended for a broad, diverse audience. Steve is drawn in a way so what we first notice is simply a funny little character and not a particular ethnicity, age or gender. He is in fact race neutral. He transcends age in that while he has the trappings of an adult, with a job and an apartment, he has the mentality and impulses of a child. Indeed, some of Steve’s “mental field trips” bring him back to the playground of his grade school days.

I hope you enjoy the enclosed samples! Thank you for your consideration of *Steve*. Much of this same package can be viewed at [DanKilleen.com](http://DanKilleen.com). Please call or write if you have questions or would like to see additional material.

Best regards,

Dan Killeen



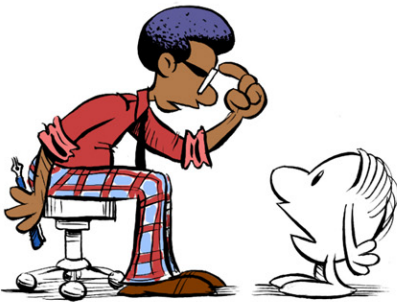
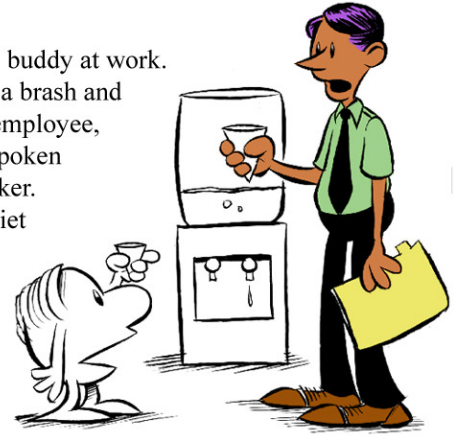
# Steve

## Cast of Supporting Characters - page 1



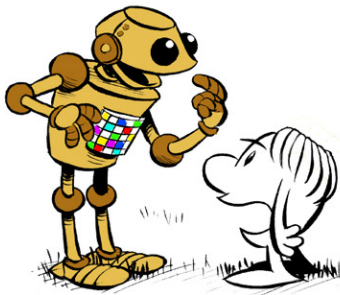
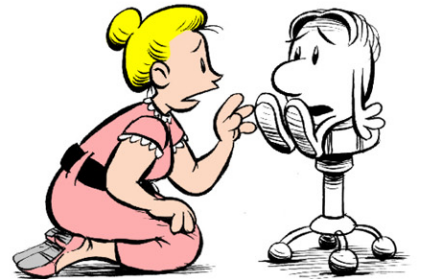
**Louis** is Steve's clown roommate. He is a barely-employed entertainer who is usually late on rent and punctual on driving Steve crazy. Louis prefers to keep his clown suit on, even when he's just sitting around the apartment eating Steve's cereal.

**Hanley** is Steve's buddy at work. Whereas Steve is a brash and easily distracted employee, Hanley is a soft-spoken and steadfast worker. Because of his quiet nature he is perceived by Steve as a bit naïve and in need of Steve's worldly counsel.



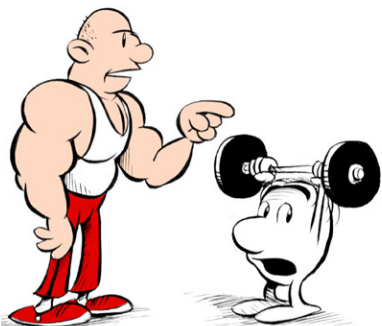
**James** is a sage-like mentor in Steve's life. He is an enigmatic coworker of Steve and leads a disciplined, semi-monastic life. James is a vocal opponent of technology, pop culture and other corruptors of mind, body and soul. Unfortunately, his golden kernels of wisdom are usually lost on the clueless Steve.

**Becky** is the office manager where Steve works and serves as a soothing mother figure in his life. When Steve is distraught, Becky is on the scene to give him saccharine sweet advice



"**Robots** are everywhere nowadays," laments Steve, as they outperform humans for good paying jobs. Steve can't stand robots for a number of reasons, but especially for their making telemarketing calls to him in the middle of a good show

**Karen** is Steve's romantic interest at work, though she is completely uninterested in him. Undeterred, Steve thinks up new and creative ways to win her heart.



**Frank** is the chiseled manager of the gym where Steve goes. Frank is not pleased with the lack of focus displayed by Steve, who is distracted by the pretty girls and protein shakes available at the

Steve's **doctor** is passionate about his patients' wellbeing. Too bad Steve is a buffoon patient who is passionate about fast food and snack cakes.



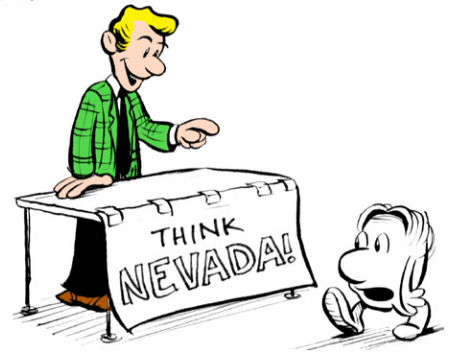
# Steve

## Cast of Supporting Characters - page 2



The **neighborhood cop** often confronts Steve for littering, loitering and many other minor infractions he commits.

**Con artists** lurk around just about every corner, and they know Steve is an easy mark. His gullibility for their schemes has made many a huckster rich quick while leaving Steve empty-handed.



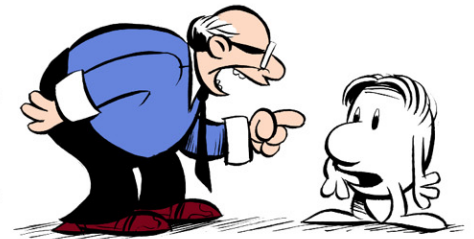
**Todd** is Steve's supervisor at the office. He has the hair-graying task of getting Steve to actually DO something.

**Virgil**, the back alley dragon, occasionally comes to scavenge the garbage cans and pay a visit to Steve. He is the type of imaginary, magical friend Steve hoped for as a kid but now is a bit of an inconvenience for the adult Steve, who just wants to get some sleep.



Steve is often interrogated by two young **outer space aliens** whose mission is to gather behavioral data on mankind for a term paper they are writing.

**Mr. Clayton** is the president of the company where Steve works. He stands as the confident, old-school father figure in the strip.



**Fred** is Steve's go-to hotdog vendor. Fred is a man of few words, a quality which allows Steve to fill the air with his own uninterrupted verbal ramblings.

**Dino Sapiens** (thinking dinosaurs) are modern dinosaurs who survived the mass extinction and walk among us today. They dress like humans so they can blend in and one day take over the world! Steve is ever vigilant against the dino menace.



**Mischievous imps** descend on Steve from time to time, tempting him to sign up for more credit cards. Though he declares, "Credit card companies are evil! Pure evil!" Steve can't seem to shake his habit of borrowing and spending.

**Quintus**, the tattletale elf, spies on Steve each December and reports his findings back to Santa. Steve is already a bit paranoid, so Quintus' snooping about only adds to Steve's anxieties.

